



① EXISTING VIEWSHED FROM UNION STREET, SOUTH (VANTAGE POINT 1)  
EXISTING VIEWSHED 1A



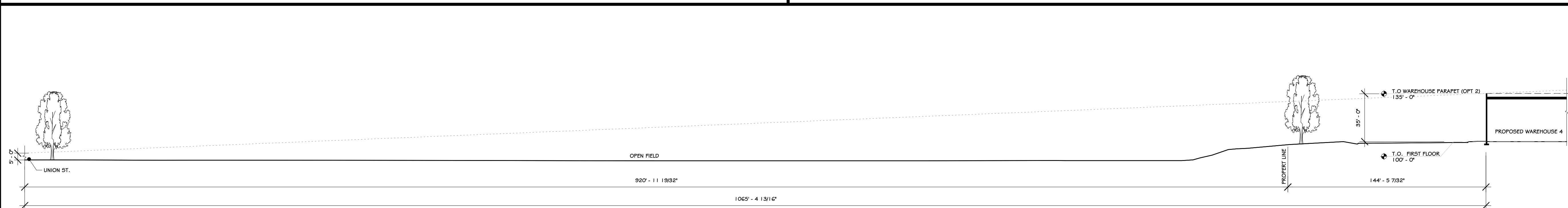
② PROPOSED VIEWSHED FROM UNION STREET, SOUTH (VANTAGE POINT 1) - 35' HT. COMPARISON  
LANDSCAPING AT YEAR 1



③ PROPOSED VIEWSHED FROM UNION STREET, SOUTH (VANTAGE POINT 1) - 35' HT. COMPARISON  
LANDSCAPING AT YEAR 5



④ PROPOSED VIEWSHED FROM UNION STREET, SOUTH (VANTAGE POINT 1) - 35' HT. COMPARISON  
LANDSCAPING AT YEAR 10



⑤ SITE SECTION VP-1  
1" = 40'-0"

**PROJECT**

**NORTH**

KEY PLAN

**100% PLANNING BOARD SUBMISSION**

**REVISIONS:**

NUM.	DATE	DESCRIPTION
1	12/02/22	PB RESUBMISSION

**ANDERSON DESIGN GROUP**

ARCHITECTURE  
PLANNING  
INTERIORS

25 WALLKILL AVE • MONTGOMERY • NY 12549  
O. 845. 294.2724 | F. 888. 305.6442

WWW.ADGARCHITECT.COM  
CONTACT@ADGARCHITECT.COM

Project: **RTE 211/ UNION STREET**  
**MONTGOMERY, NEW YORK 12549**

Drawing Name: **VIEWSHED RENDERINGS UNION ST (VANTAGE POINT-1) SOUTH - 35' HT. COMPARISON**

Drawn: **IDEA** Scale: **AS NOTED** Project: **22100** Date: **09/16/22**

Drawing Number: **VP-1**



① EXISTING VIEWSHED FROM UNION STREET (VANTAGE POINT 2) NEAR ENTRANCE - OPTION EXISTING VIEWSHED 2A

② PROPOSED VIEWSHED FROM UNION STREET (VANTAGE POINT 2) NEAR ENTRANCE - 35' HT. COMPARISON LANDSCAPING AT YEAR 1



③ PROPOSED VIEWSHED FROM UNION STREET (VANTAGE POINT 2) NEAR ENTRANCE - 35' HT. COMPARISON LANDSCAPING AT YEAR 5

④ PROPOSED VIEWSHED FROM UNION STREET (VANTAGE POINT 2) NEAR ENTRANCE - 35' HT. COMPARISON LANDSCAPING AT YEAR 10

**PROJECT**

**NORTH**

KEY PLAN

AREA OF CONSTRUCTION

**100% PLANNING BOARD SUBMISSION**

**REVISIONS:**

NUM.	DATE	DESCRIPTION
1	12/02/22	PB RESUBMISSION

**ANDERSON DESIGN GROUP**

ARCHITECTURE  
PLANNING  
INTERIORS

25 WALLKILL AVE • MONTGOMERY • NY 12549  
O. 845. 294.2724 | F. 888.305.6442

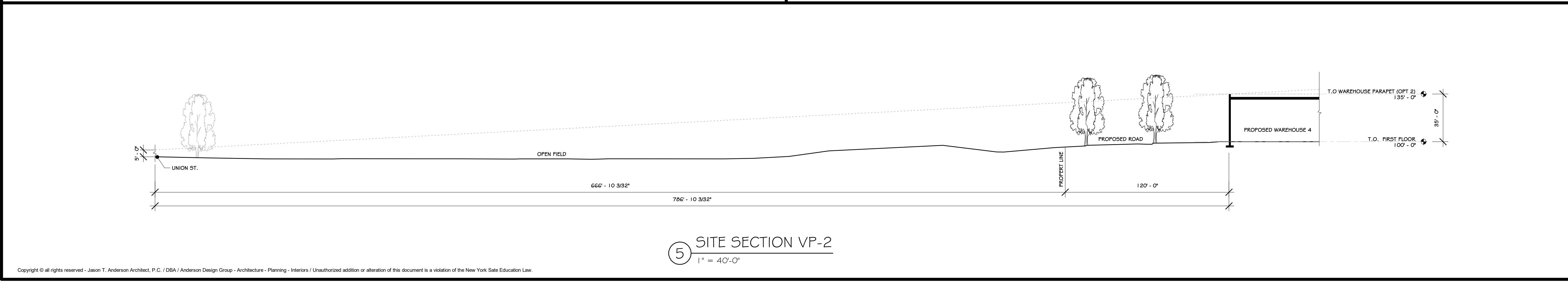
WWW.ADGARCHTECT.COM  
CONTACT@ADGARCHTECT.COM

Project: **RTE 211/ UNION STREET  
MONTGOMERY, NEW YORK 12549**

Drawing Name: **VIEWSHED RENDERINGS UNION ST (VANTAGE POINT-2) NEAR ENTRANCE - 35' HT. COMPARISON**

Drawn: **IDEA** Scale: **AS NOTED** Project: **22100** Date: **09/16/22**

Drawing Number: **VP-2**





① EXISTING VIEWSHED FROM UNION STREET (VANTAGE POINT 3) ENTRANCE - OPTION 3A  
EXISTING VIEWSHED 3A



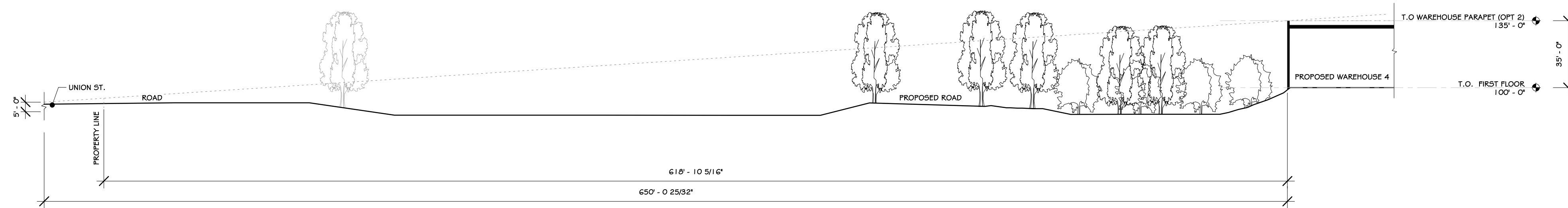
② PROPOSED VIEWSHED FROM UNION STREET (VANTAGE POINT 3) ENTRANCE - 35' HT. COMPARISON  
LANDSCAPING AT YEAR 1



③ PROPOSED VIEWSHED FROM UNION STREET (VANTAGE POINT 3) ENTRANCE - 35' HT. COMPARISON  
LANDSCAPING AT YEAR 5



④ PROPOSED VIEWSHED FROM UNION STREET (VANTAGE POINT 3) ENTRANCE - 35' HT. COMPARISON  
LANDSCAPING AT YEAR 10



⑤ SITE SECTION VP 3  
1" = 40'-0"

**PROJECT**

**NORTH**

KEY PLAN

AREA OF CONSTRUCTION

**100% PLANNING BOARD SUBMISSION**

**REVISIONS:**

NUM.	DATE	DESCRIPTION
1	12/02/22	PB RESUBMISSION

**ANDERSON DESIGN GROUP**

ARCHITECTURE  
PLANNING  
INTERIORS

25 WALLKILL AVE • MONTGOMERY • NY 12549  
O. 845. 294.2724 | F. 888. 305.6442

WWW.ADGARCHITECT.COM  
CONTACT@ADGARCHITECT.COM

Project: **RTE 211/ UNION STREET**  
MONTGOMERY, NEW YORK 12549

Drawing Name: **VIEWSHED RENDERINGS UNION ST (VANTAGE POINT-3) ENTRANCE - 35' HT. COMPARISON**

Drawn: **IDEA** Scale: **AS NOTED** Project: **22100** Date: **09/16/22**

Drawing Number: **VP-3**